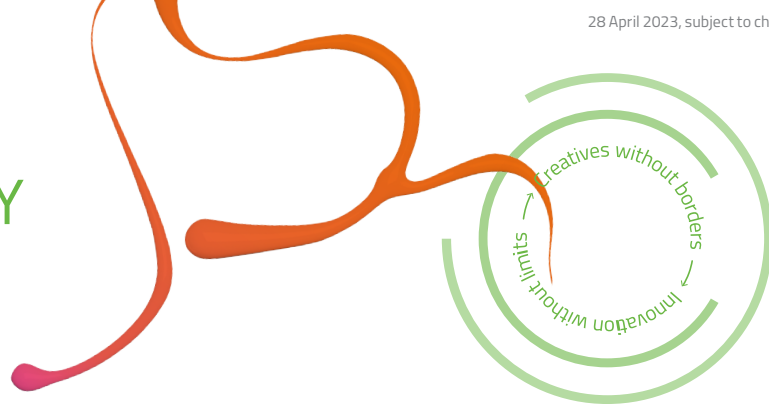


# BECOME A MEMBER OF EIT CULTURE & CREATIVITY



## Join the movement of game changers for culture and creativity!

### What is EIT Culture & Creativity?

As the ninth Knowledge & Innovation Community (KIC), EIT Culture & Creativity is designed to strengthen and transform Europe's Cultural and Creative Sectors and Industries (CCSI). EIT Culture & Creativity will leverage CCSI's diversity to strengthen its innovation transfer capabilities and create space to become more competitive and attractive globally. EIT Culture & Creativity will also harness the role of CCSI as enabler of Europe's green, digital and social transitions.

Starting in  
2024

### Who should join?

EIT Culture & Creativity is an open Innovation Community in which all stakeholders in the CCSI are welcome. The community offers a broad range of benefits and services fit for both individuals and organisations regardless of their size, mission or subsector.

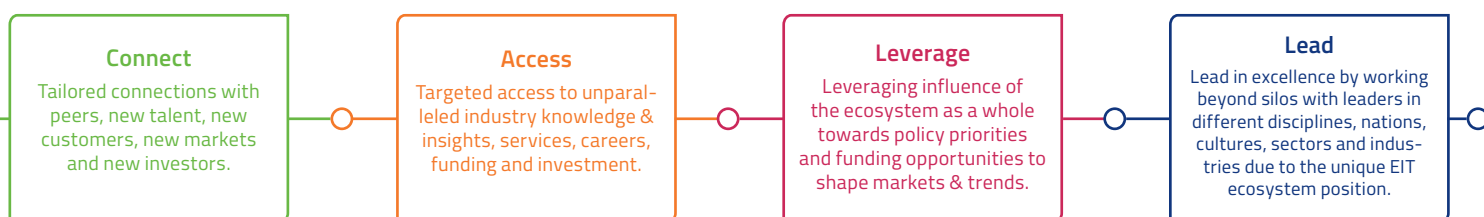
### What is EIT Culture & Creativity doing concretely?

EIT Culture & Creativity will orchestrate and support initiatives in education, innovation, business creation and cultural development for improving the competitiveness of European CCSI and their ability to facilitate the Triple Transition. EIT Culture & Creativity will support:

- novel higher education programmes including masters, PhDs and lifelong learning courses
- innovation projects that will bring new products and services closer to markets
- businesses and ventures in their startup phase or navigating their scale up ambition
- initiatives strengthening cultural identities and values as well as social cohesion
- flagship initiatives that will contribute to creating systemic and sustainable impact, e.g. Investment Club

### What is EIT Culture & Creativity's value proposition for members?

EIT Culture & Creativity's value proposition harnesses the power of the Innovation Community, tapping into the diversity of CCSI across 15 sectors and 30 countries to help each of its members achieve goals they cannot achieve alone, while contributing to the shared endeavour.



### Member Categories

- **Associates:** individuals who join the community by signing up to the online platform.
- **Community members:** individuals or organisations who join this category become engaged and actively participate in delivering impact for the CLC regional ecosystem.
- **Cooperation partners:** individuals or organisations who join this category become engaged and actively participate in delivering impact for the European CCSI ecosystem.
- **Core partners:** organisations who join this category become part of the governance structure and take a seat in EIT Culture & Creativity's General Assembly.

Cooperation Partners and Core Partners legally join the EIT CCSI e.V.; they become full or extraordinary members of the EIT CCSI e.V. Associates & Community Members are not legally joining the EIT CCSI e.V.; they are associated with the EIT CCSI e.V.

## Membership benefits

EIT Culture & Creativity will offer the following benefits starting in 2024. These benefits are subject to change by the General Assembly. Natural persons joining at individual capacity may benefit from adapted services and benefits.

		Associates	Community members	Cooperation partners	Core partners
Ability to initiate contact and engage with other members	CLC region	Limited	✓	✓	✓
	Europe	—	—	Limited	✓
Use the Talent Pool to support job, internship or recruitment search	Post professional profile	✓	✓	✓	✓
	Search for jobs, internships or talent in CLC region	—	✓	✓	✓
	Search for jobs, internships or talent in Europe	—	—	✓	✓
	Receive analytics from Talent Pool	—	—	—	✓
Access to EIT Culture & Creativity information and insights	Funding and training opportunities	✓	✓	✓	✓
	Newsletter	✓	✓	✓	✓
	Special contents only for members	—	✓	✓	✓
	News related to Investment and Policy Clubs	—	—	✓	✓
	Industry knowledge and insights generated by KIC	—	—	—	✓
	Access deal flow and Policy Club opportunities	—	—	—	✓
Influence on contents and priorities related to challenges and opportunities of CCSI	Vote and prioritize options in participation campaigns in CLC region	✓	✓	✓	✓
	Debate options in participation campaigns in CLC region	—	✓	✓	✓
	Propose topics and debates at European level	—	—	✓	✓
Attract potential partners	Post company profile	—	✓	✓	✓
	Post promising project idea or asset	—	Limited	✓	✓
	Search for ideas or assets	—	—	—	✓
Influence on EIT Culture & Creativity future priorities, strategies, and themes	Propose and drive content initiatives to be approved in General Assembly	—	—	—	✓ <sup>*</sup>

\* This includes participation in AP Teams, Strategic Topic Groups and The Next Renaissance.

## Membership fee structure (p.a)

The membership fee structure, established annually, is adjusted to the size of the organisations. All fees for individuals and organisations located in any of the EIT RIS eligible countries will be adjusted downwards following the Country Correction Coefficient used in Horizon Europe's Marie Skłodowska-Curie programme.

Associates	Community members	Cooperation partners	Core partners	
Free	Freelancer/Students	€100	Individual membership	€1.000
	Small: Micro/Start-ups	€500	Small: Micro/Start-ups	€5.000
	Medium: Mid-size Org/Scaleups	€2.500	Medium: Mid-size Org/Scaleups	€15.000
	Large: Institutions/Corporates	€5.000	Large: Institutions/Corporates	€20.000
			€25.000	

## Interested in joining us at EIT Culture & Creativity?

Please contact us through [members@eit-culture-creativity.eu](mailto:members@eit-culture-creativity.eu)